

SINGLE TENANT FREESTANDING BUILDING FOR SALE

122 North Main Street | Port Chester, New York 10573



CHASE BANK

ABSOLUTE NNN

FOR SALE

CALL FOR DETAILS

INVESTMENT HIGHLIGHTS

- 5,082 SF Single Tenant Property Situated in a Prime Westchester County Location
- Chase Bank Corporate Long Term Lease
- Trending Market
- In the Heart of Port Chester's Retail Corridor
- 11,800 Vehicles Per Day Along Main Street
- Walk To Metro North Port Chester Train Station
- 27' Ceiling Heights
- Approximately 3,000 Planned Residential Units Surround The Property

AREA DEMOGRAPHICS

	1 Mile	3 Miles	5 Miles
Population	34,858	77,613	139,402
Avg. HH Income	\$136,062	\$238,043	\$276,294

NEIGHBORING RETAILERS:



ROYAL

PROPERTIES

850 Bronx River Road | Bronxville, NY 10708
www.RoyalPropertiesInc.com

BROKER CONTACT:

JAMES ARIES
Managing Director
914-237-3400, Ext. 114
Jim@RoyalPropertiesInc.com

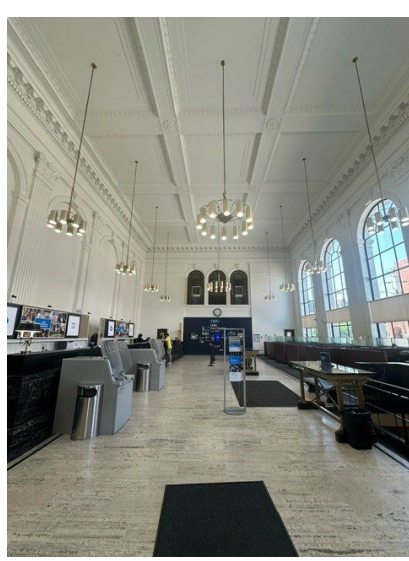
JEFF KINTZER
Principal
914-237-3400, Ext. 103
Jeff@RoyalPropertiesInc.com

All information furnished herein is from sources deemed reliable. No warranty or representation is made to the accuracy thereof and it is submitted subject to errors, omissions and/or changes without notice.

SINGLE TENANT FREESTANDING BUILDING FOR SALE

122 North Main Street | Port Chester, New York 10573

CHASE BANK | ABSOLUTE NNN



ROYAL PROPERTIES

850 Bronx River Road | Bronxville, NY 10708
www.RoyalPropertiesInc.com

BROKER CONTACT:

JAMES ARIES
Managing Director
914-237-3400, Ext. 114
Jim@RoyalPropertiesInc.com

JEFF KINTZER
Principal
914-237-3400, Ext. 103
Jeff@RoyalPropertiesInc.com

All information furnished herein is from sources deemed reliable. No warranty or representation is made to the accuracy thereof and it is submitted subject to errors, omissions and/or changes without notice.