



JOIN
**WHOLE
FOODS**
MARKET

Saks OFF
5TH

LEASING OPPORTUNITY

2,612 SF | 30,409 SF

110 High Ridge Road

Stamford, Connecticut

ROYAL
PROPERTIES

HBC

STREETS
WORKS
DEVELOPMENT

Executive Summary

JOIN



	1 MILE	3 MILES	5 MILES	10 MILES
POPULATION	15,310	144,618	196,130	413,416
AVERAGE HOUSEHOLD INCOME	\$148,737	\$133,769	\$152,308	\$155,031
DAYTIME DEMOS	11,894	100,424	133,477	280,724

HIGHLIGHTS

Available Space:

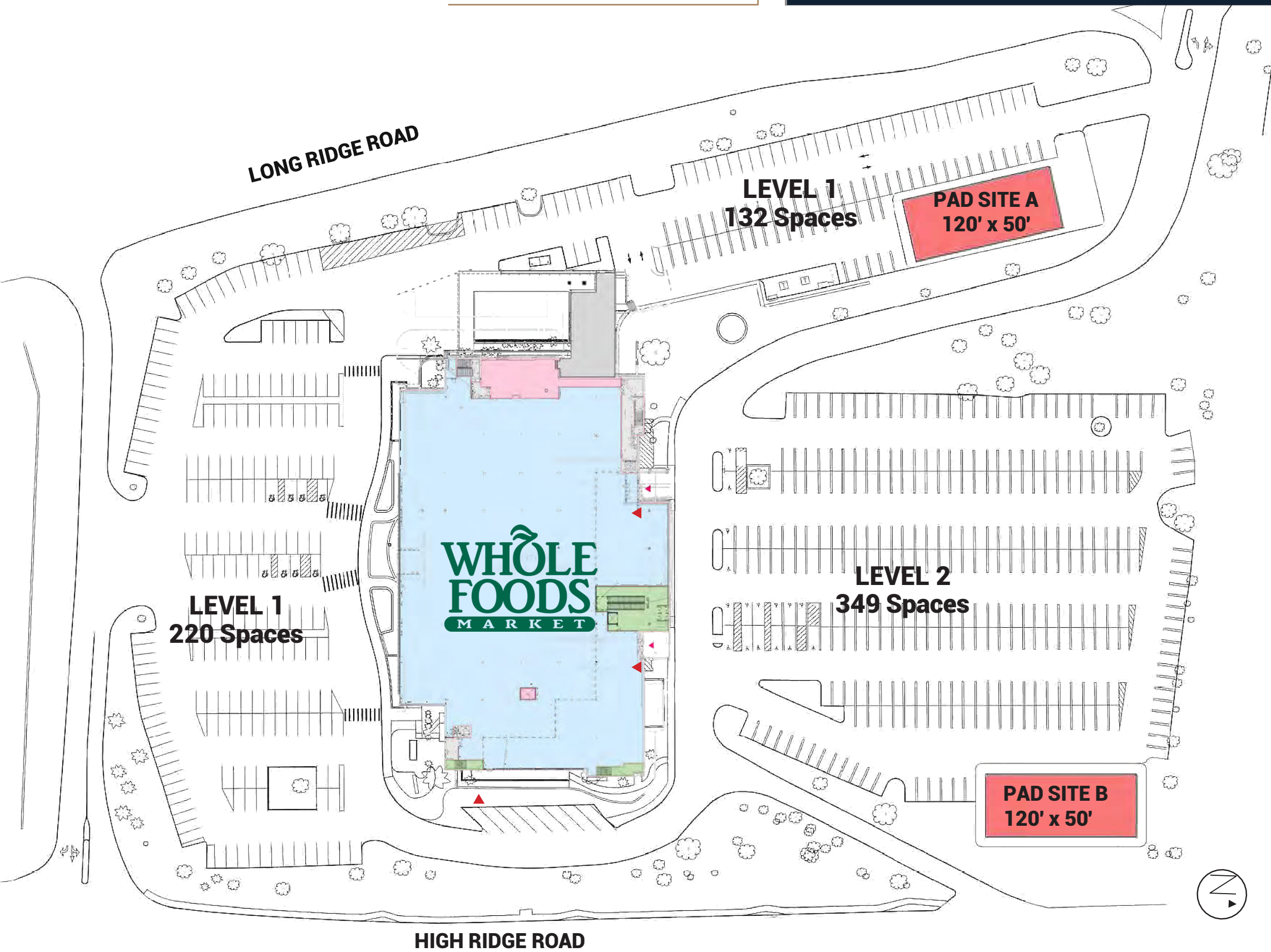
2,612 SF
30,409 SF

- High Visibility Frontage and Signage Opportunities
- Premier Destination Featuring 44,648 SF Whole Foods Market and Saks OFF 5th
- 159,582 Total Square Foot Three-Level Structure on 12.4 Total Acres
- Over 700+ Outdoor Parking Spaces
- Multiple Entrances Allowing for Public and Private Access
- Located in the Heart of the Developing Stamford Neighborhood of Bull's Head
- Situated Centrally Between the Area's Two Major Vehicular Arteries – The Merritt Parkway and I-95
- 16 Foot Ceilings
- 30 Foot Column Spans

NEIGHBORING RETAILERS



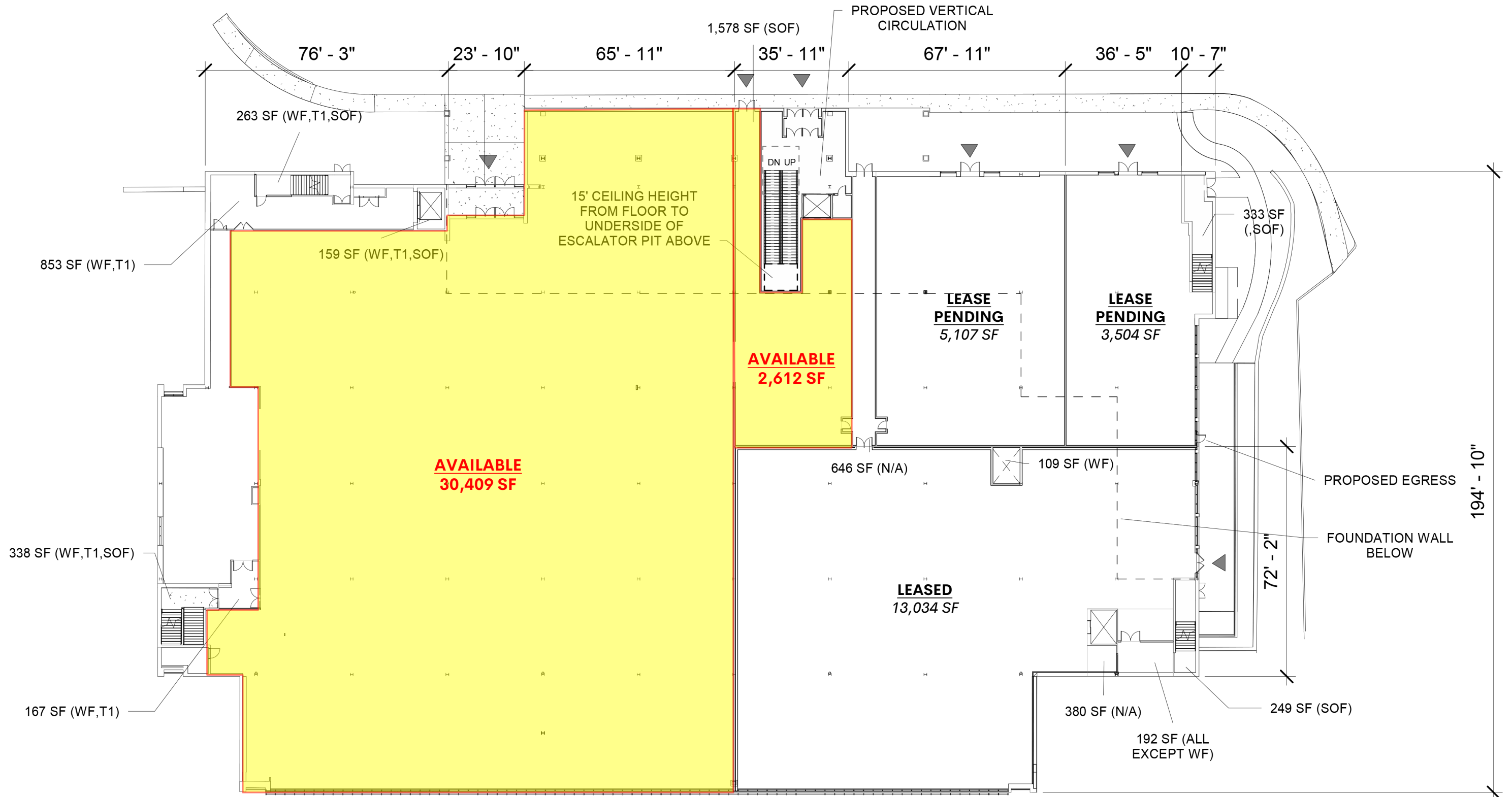
Site Plan



SITE PLAN

- High Visibility Frontage
- Surface Parking - over 700 spaces
- Total Acreage: 12.4 Acres
- Multiple access points
- ▼ Primary Entrance

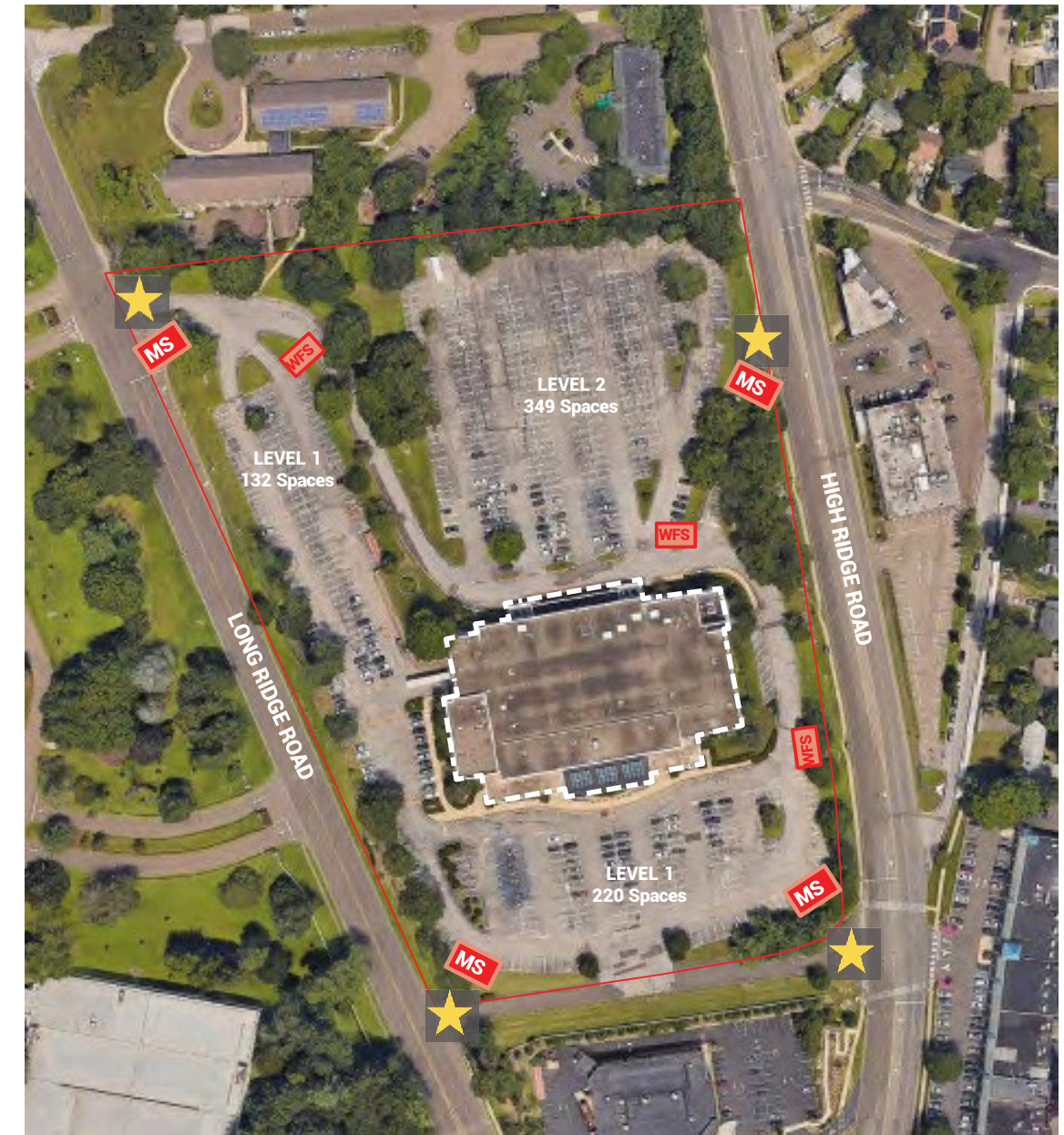
Floor Plan






Access Plan & Signage



Illustrative Example



ACCESS PLAN

-  Parking Lot Entrance
-  Wayfinding Signage
-  Monument Signage

Market Aerial





Leasing Contact

The data included in this document is based on estimates being provided on a preliminary basis and subject to change and further verification.

David Landes

Royal Properties, Inc.

914-237-3400, Ext. 104

david@royalpropertiesinc.com

Zach Landes

Royal Properties, Inc.

914-237-3400, Ext. 123

zach@royalpropertiesinc.com

Karnit Mosberg

Royal Properties, Inc.

914-237-3400, Ext. 110

karnit@royalpropertiesinc.com

ROYAL
PROPERTIES

