

750  
SQUARE



**750 White Plains Road**  
EASTCHESTER • NEW YORK

*Retail Redevelopment*  
**16,272 RSF & 12,049 SF**



# EASTCHESTER, NY

750 SQUARE ▪ 750 WHITE PLAINS ROAD (ROUTE 22)

## RETAIL SPACE FOR LEASE

### JOIN CO-TENANTS



PLUS NEWLY SIGNED LUXURY F&B RETAIL COMING SOON

### HIGHLIGHTS

- 220,075 SF Retail Redevelopment
- 16,272 RSF & 12,049 SF Available For Lease
- Join 38,000 SF Saks Off Fifth & 74,000 SF White Plains Hospital Medical Offices (Coming Soon)
- Multiple Access Points
- Adjacent To Vernon Hills Shopping Center
- Prominent Shopping Destination In S. Westchester County
- 640 Parking Spaces
- Ceiling Heights: Up to 16'-8" Floor to Slab (varies)
- Column Spacing: Approx. 30'
- Ease Of Access To The Hutchinson River Parkway And The Bronx River Parkway
- Traffic Counts: 11,312 Cars Per Day Along Route 22 (White Plains Road)

### NEIGHBORING RETAILERS

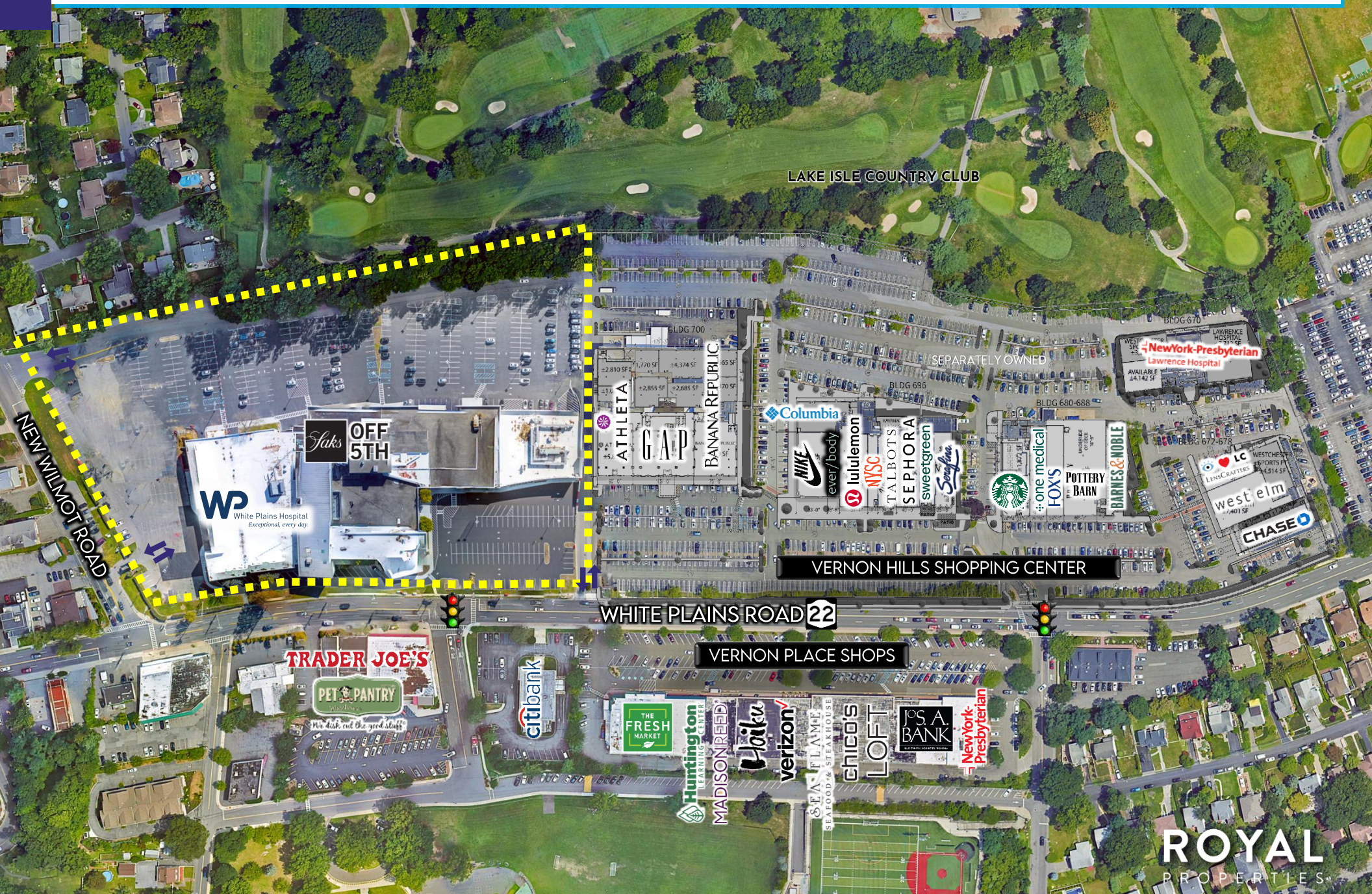




# EASTCHESTER, NY

750 SQUARE ■ 750 WHITE PLAINS ROAD (ROUTE 22)

## RETAIL SPACE FOR LEASE



ROYAL  
PROPERTIES



# EASTCHESTER, NY

750 SQUARE ▪ 750 WHITE PLAINS ROAD (ROUTE 22)

LEVEL 1



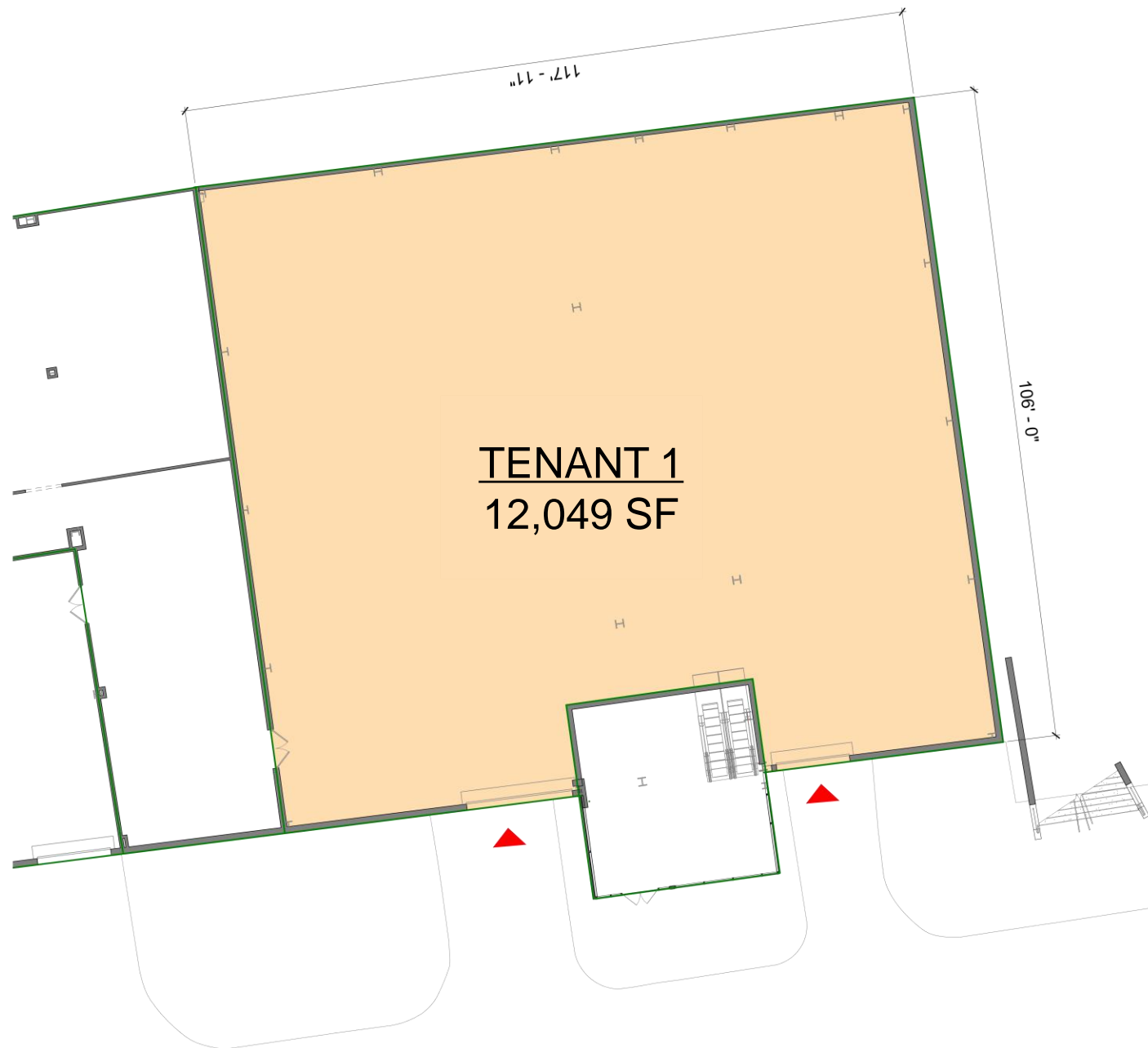
12,049 SF  
AVAILABLE

**ROYAL**  
PROPERTIES

# EASTCHESTER, NY

750 SQUARE ▪ 750 WHITE PLAINS ROAD (ROUTE 22)

LEVEL 1

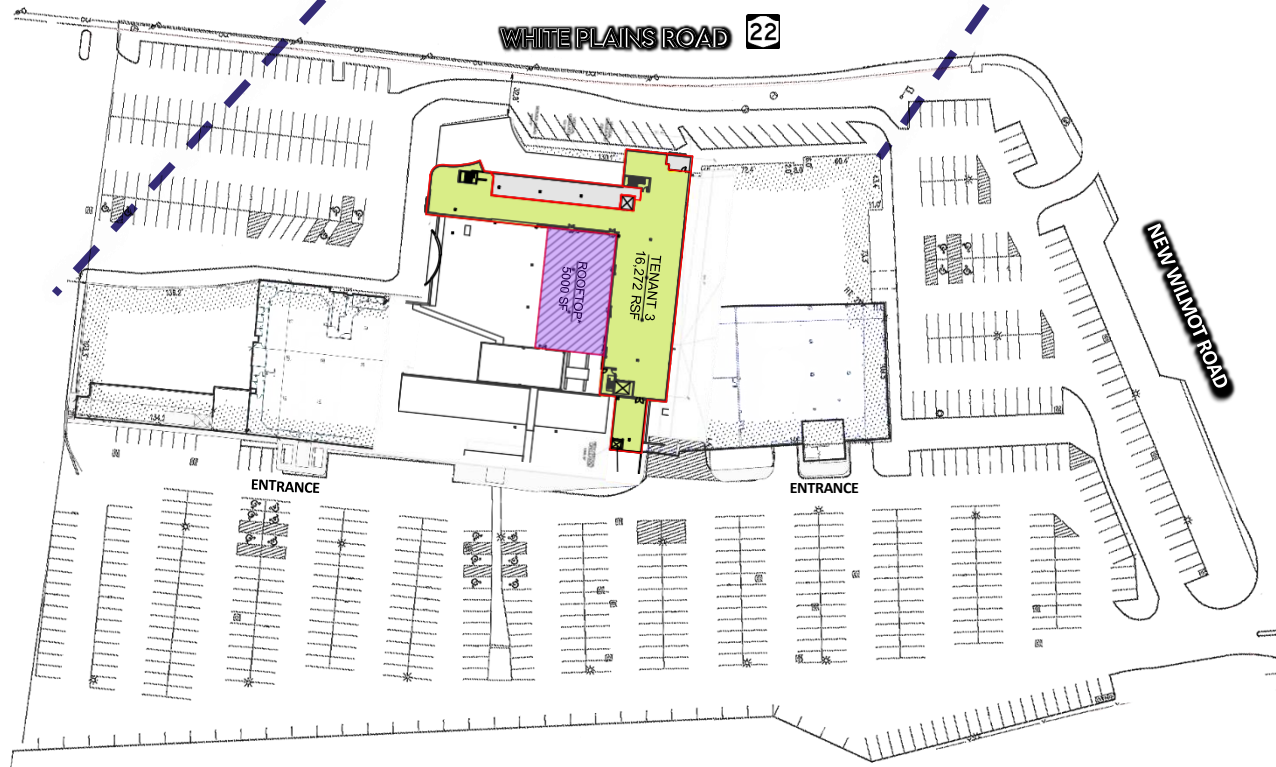




# EASTCHESTER, NY

750 SQUARE ▪ 750 WHITE PLAINS ROAD (ROUTE 22)

LEVEL 3



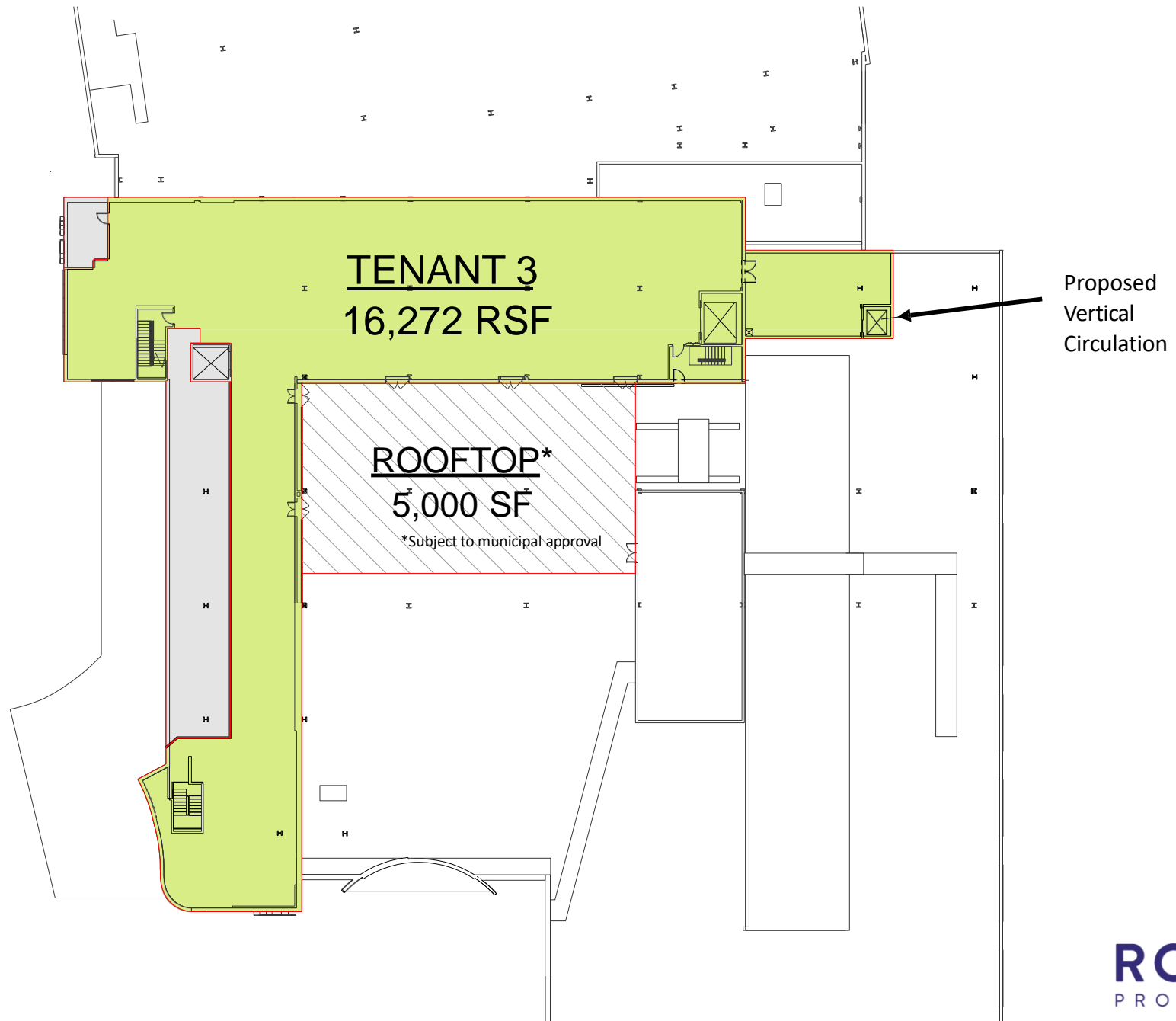
16,272 RSF  
AVAILABLE

**ROYAL**  
PROPERTIES

# EASTCHESTER, NY

750 SQUARE ■ 750 WHITE PLAINS ROAD (ROUTE 22)

LEVEL 3





# EASTCHESTER, NY

750 SQUARE ▪ 750 WHITE PLAINS ROAD (ROUTE 22)

LEVEL 3

PROPOSED  
ACCESS  
ROOFTOP  
VESTIBULE

5,000 SF±  
OUTDOOR  
PATIO



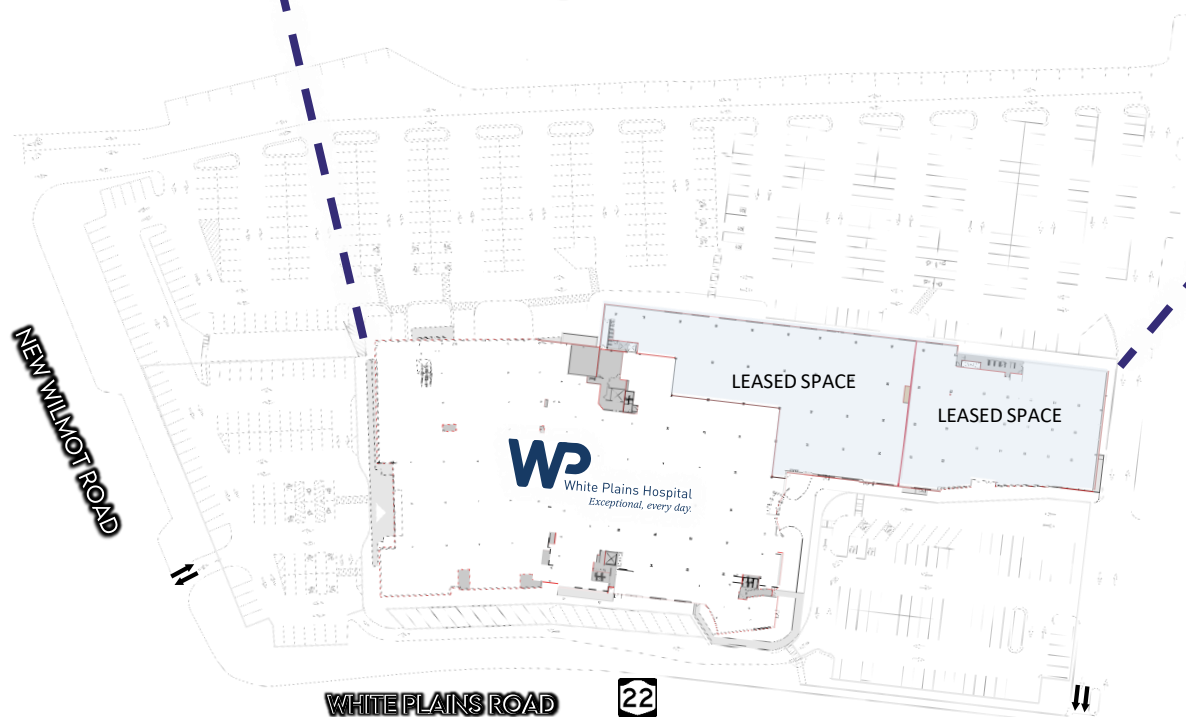
ROYAL  
PROPERTIES



# EASTCHESTER, NY

750 SQUARE ■ 750 WHITE PLAINS ROAD (ROUTE 22)

LEVEL 2





# EASTCHESTER, NY

750 SQUARE ▪ 750 WHITE PLAINS ROAD (ROUTE 22)

## RETAIL SPACE FOR LEASE

### MARKET AERIAL

### SITE



### VERNON HILLS SHOPPING CENTER



EQUINOX

### DECICCO'S PLAZA



### TRADER JOE'S



### VERNON PLACE SHOPS



ROYAL  
PROPERTIES





## LEASING CONTACTS

**DAVID LANDES**

914-237-3400 – Ext. 104

David@royalpropertiesinc.com

**ZACH LANDES**

914-237-3400 – Ext. 123

Zach@royalpropertiesinc.com

**KARNIT MOSBERG**

914-237-3400 – Ext. 110

Karnit@royalpropertiesinc.com

[WWW.ROYALPROPERTIESINC.COM](http://WWW.ROYALPROPERTIESINC.COM)

**ROYAL**  
PROPERTIES

All information furnished herein is from sources deemed reliable. No warranty or representation is made to the accuracy thereof and it is submitted subject to errors, omissions and/or changes without notice.